



Hotel solutions

by **Sola** Switzerland AG

❑❑ Sola Switzerland

Cutlery creator since 1866

Since 1866 Sola Switzerland AG has been and still is the biggest and most important Swiss producer of top-quality cutlery. A long-lasting business relation with us means meeting people, who's one and only passion is to achieve extraordinary goals and top standards through hard work and unceasing service-mindedness. Thanks to the enthusiasm of the whole team - in sales, logistics and management alike - we can guarantee for customer satisfaction and vouch for the quality of our products at all times.



❑❑ Sola

Fabric & Production

❑❑ Lunasol

Table Top & Food Concepts

❑❑ Lusol

Service in Concept



Social Responsibility

Certified by B.S.C.I. (Business Social Compliance Initiative)
ISO 9001-certified
Banning child labour
Banning enforced labour



Swiss Tradition

Our cutlery has been created with Swiss precision, immense know-how, professionalism and uniqueness for last five generations.



Ecological Standards

Product recycling
Provident handling of natural resources
Sustainability as main standard for all procedures
Constant technological progress



Guaranteed continuity of production

Highest quality guaranteed thanks to our own factories.
Guaranteed continuity of production on the best-selling cutlery lines (10 years for the Master Chef lines).

Sola Switzerland

Speciality Restaurants - Fine Dining



Exeter
Matt

Thickness: 8.5
Origin: Indonesia

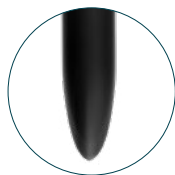
Range: Platinum
Surface: Matt
Material and Technology: Monoblock,
Chromenickel steel 18/10



Exeter
Matt + Black

Thickness: 8.5
Origin: Indonesia

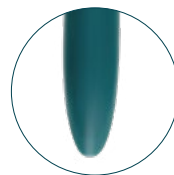
Cutlery: Platinum
Surface: Matt
Material and Technology: Monoblock,
Chromenickel steel 18/10



Exeter
Matt + Green

Thickness: 8.5
Origin: Indonesia

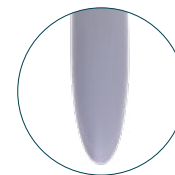
Cutlery: Platinum
Surface: Matt
Material and Technology: Monoblock,
Chromenickel steel 18/10



Exeter
Matt + Grey

Thickness: 8.5
Origin: Indonesia

Cutlery: Platinum
Surface: Matt
Material and Technology: Monoblock,
Chromenickel steel 18/10



Exeter
Matt + Brown

Thickness: 8.5
Origin: Indonesia

Cutlery: Platinum
Surface: Matt
Material and Technology: Monoblock,
Chromenickel steel 18/10



Hotel Solutions

Sola Switzerland Speciality Restaurants - Fine Dining



f FINE DINING



Fiori
Mirror

Thickness: Hollow Handle
Origin: Indonesia

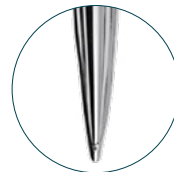
Range: Platinum
 Surface: Mirror
 Material and Technology:
 Hollow Handle, Forged, Welded,
 Chromenickel steel 18/10



Montevideo
Mirror/Sandblast

Thickness: Hollow Handle
Origin: Indonesia

Range: Platinum
 Surface: Mirror/Sandblast
 Material and Technology:
 Hollow Handle, Forged, Welded,
 Chromenickel steel 18/10



Cubism 21st century
Mirror

Thickness: Hollow Handle
Origin: Indonesia

Range: Platinum
 Surface: Mirror
 Material and Technology:
 Hollow Handle, Forged, Welded,
 Chromenickel steel 18/10



San Remo
Mirror

Thickness: Hollow Handle
Origin: Indonesia

Range: Platinum
 Surface: Mirror
 Material and Technology:
 Hollow Handle, Forged, Welded,
 Chromenickel steel 18/10



Hotel Solutions

Sola Switzerland Restaurants

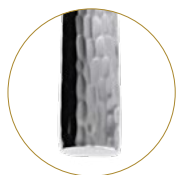


 Sola

Miracle
Hammered

Thickness: 8.0
Origin: Indonesia

Range: Premium
Surface: Hammered
Material and Technology:
Monoblock, Forged,
Chromenickel steel 18/10



 Sola

Avantgarde
Sandblast

Thickness: 6.0
Origin: China/Indonesia

Range: Premium
Surface: Sandblast
Material and Technology:
Monoblock, Hollow Handle, Forged,
Chromenickel steel 18/10



 Sola

Living
Mirror

Thickness: 5.8
Origin: China

Range: Premium/Master Chef
Surface: Mirror
Material and Technology:
Monoblock, Hollow Handle, Forged,
Chromenickel steel 18/10



Sola Switzerland Restaurants



Faro
Mirror

Thickness: 5.5
Origin: China

Range: Premium/Master Chef
Surface: Mirror
Material and Technology:
Monoblock, Hollow Handle, Forged,
Chromenickel steel 18/10



Cloud VII
Mirror

Thickness: 5.0
Origin: China

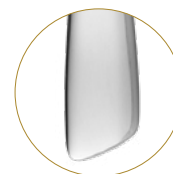
Range: Premium/Master Chef
Surface: Mirror
Material and Technology:
Monoblock, Forged,
Chromenickel steel 18/10



Pure
Mirror

Thickness: 4.0
Origin: China

Range: Master Chef
Surface: Mirror
Material and Technology:
Monoblock, Pressed,
Chromenickel steel 18/10



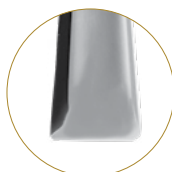
Sola Switzerland Restaurants



Alessandria
Mirror

Thickness: 3.8
Origin: China

Range: Premium/Master Chef
Surface: Mirror
Material and Technology:
Monoblock, Pressed,
Chromenickel steel 18/10



Queen
Mirror

Thickness: 3.5
Origin: China/Indonesia

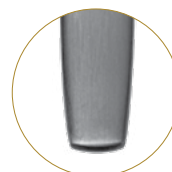
Range: Master Chef
Surface: Stone Wash
Material and Technology:
Monoblock, Pressed, Hammered
Chromenickel steel 18/10



Gaya
Satin

Thickness: 3.5
Origin: China

Range: Catwalk
Surface: Satin
Material and Technology:
Monoblock, Pressed
Chromenickel steel 18/10



Baguette Vintage
Stone Wash

Thickness: 3.0
Origin: China

Range: Master Chef
Surface: Stone Wash
Material and Technology:
Monoblock, Pressed,
Chromenickel steel 18/10



Hotel Solutions

❑❑Sola Switzerland

Coffee Shop - All Day Dining/In Room Dining



Beta
Mirror

Thickness: 4.5
Origin: China

Range: Master Chef
Surface: Mirror
Material and Technology:
Monoblock, Pressed,
Chromenickel steel 18/10



Chateau Classic
Mirror

Thickness: 4.0
Origin: China

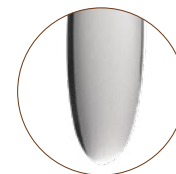
Range: Master Chef
Surface: Mirror
Material and Technology:
Monoblock, Pressed,
Chromenickel steel 18/10



Turin
Mirror

Thickness: 3.8
Origin: China

Range: Master Chef
Surface: Mirror
Material and Technology:
Monoblock, Hollow Handle, Pressed,
Chromenickel steel 18/10



City
Mirror

Thickness: 3.5
Origin: China

Range: Master Chef
Surface: Mirror
Material and Technology:
Monoblock, Pressed,
Chromenickel steel 18/10



Sola Switzerland Coffee Shop - All Day Dining/In Room Dining



Alpha
Mirror

Thickness: 3.5
Origin: China

Range: Master Chef
Surface: Mirror
Material and Technology:
Monoblock, Pressed,
Chromenickel steel 18/10



London
Mirror

Thickness: 3.5
Origin: China

Range: Master Chef
Surface: Mirror
Material and Technology:
Monoblock, Pressed,
Chromenickel steel 18/10



Baguette Gastro
Mirror

Thickness: 3.0
Origin: China

Range: Master Chef
Surface: Mirror
Material and Technology:
Monoblock, Hollow Handle, Pressed,
Chromenickel steel 18/10



Roma
Mirror

Thickness: 3.0
Origin: China

Range: Master Chef
Surface: Mirror
Material and Technology:
Monoblock, Pressed,
Chromenickel steel 18/10



Sola Switzerland Banquets



Lusol

Callisto CNS/CR
Mirror

Thickness: 3.0
Origin: Indonesia

Range: Master Chef
 Surface: Mirror
 Material and Technology:
 Monoblock, Pressed,
 Chromenickel steel 18/10,
 Chrome steel 18/0



Lusol

Bacchus CNS/CR
Mirror

Thickness: 3.0
Origin: Indonesia

Range: Master Chef
 Surface: Mirror
 Material and Technology:
 Monoblock, Pressed,
 Chromenickel steel 18/10,
 Chrome steel 18/0



Sola

Atlantic 2000
Mirror

Thickness: 3.0
Origin: China

Range: Master Chef
 Surface: Mirror
 Material and Technology:
 Monoblock, Pressed,
 Chromenickel steel 18/10



Lusol

Athene CNS/CR
Mirror

Thickness: 2.5
Origin: Indonesia

Range: Master Chef
 Surface: Mirror
 Material and Technology:
 Monoblock, Pressed,
 Chromenickel steel 18/10,
 Chrome steel 18/0



Sola Switzerland Banquets



Milano
Mirror

Thickness: 2.5
Origin: Indonesia

Range: Master Chef
Surface: Mirror
Material and Technology:
Monoblock, Pressed,
Chromenickel steel 18/10



Joker
Mirror

Thickness: 2.0
Origin: Indonesia

Range: Master Chef
Surface: Mirror
Material and Technology:
Monoblock, Pressed,
Chromenickel steel 18/10



Thank you for your attention.



Sola Switzerland EU Ltd.
Novozámocká 1065
SK-95112 Ivanka pri Nitre

Contact:
ka@solaswiss.com
+421 (0) 37 285 14 17

www.solaswiss.com